



Experience simplicity.

Arriva

Concealed frame doorsets



1

2

Wall construction preparation guide

Thank you for choosing Arriva

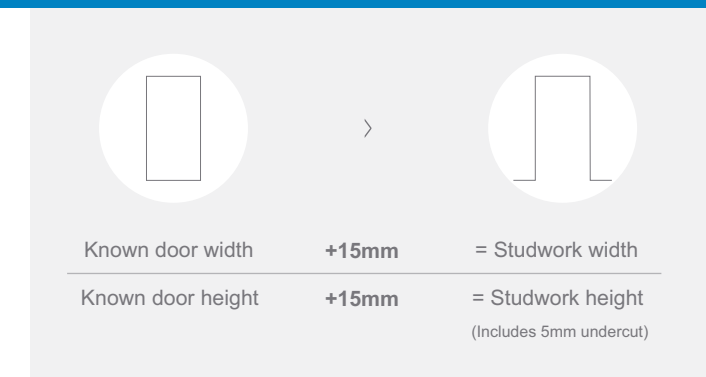
www.em-b.co.uk

Wall construction preparation

The Arriva system is suited for use on studwork partitions of either steel or timber.

Structural opening calculations

From **known door dimensions** you can calculate the required **studwork width & height**.

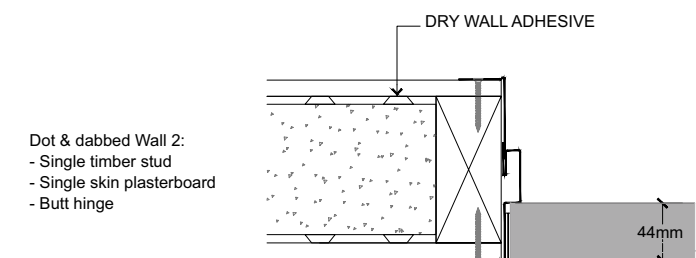
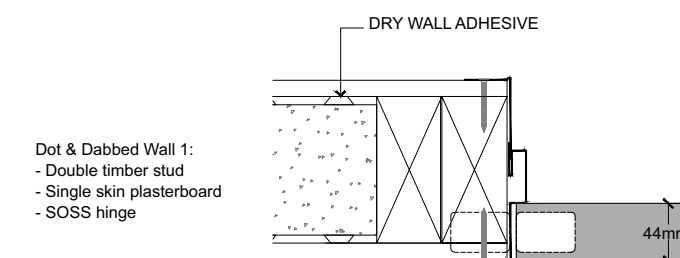


Masonry wall construction

If Arriva is being used on a masonry wall then a timber stud is required within the opening. Once this has been fitted, the wall can be clad with plasterboard using the dot & dab method by fixing the plasterboard to the wall with drywall adhesive. This allows the Arriva frame to be installed in the standard way.

Important - When using an overhead concealed closer

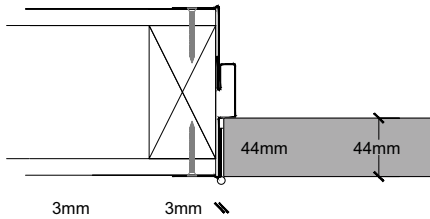
If an overhead concealed closer is being used then a double stud is required at the head. Ensure the lower stud is timber to allow the closer channel to be installed easily.



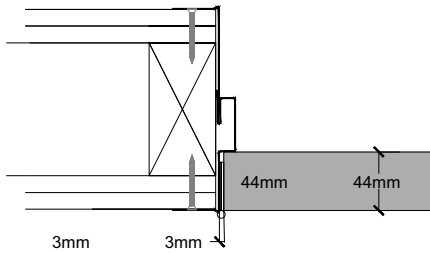
Butt hinges

Timber stud partitioning

- Single stud
- Single skin plasterboard
- Butt hinge

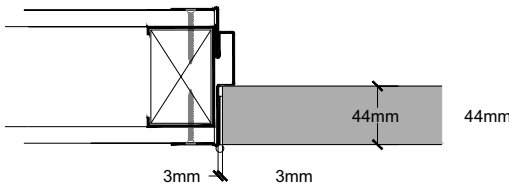


- Single stud
- Double skin plasterboard
- Butt hinge

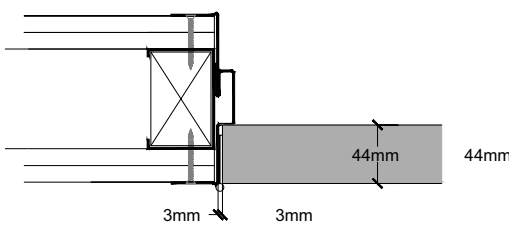


Steel stud partitioning

- Single stud
- Timber stud insert
- Single skin plasterboard
- Butt hinge



- Single stud
- Timber stud insert
- Double skin plasterboard
- Butt hinge



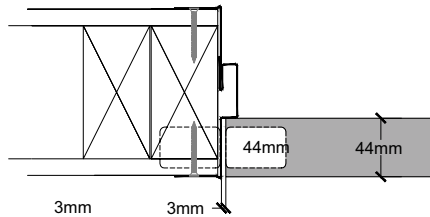
Important

When using a steel stud a timber insert must be used.

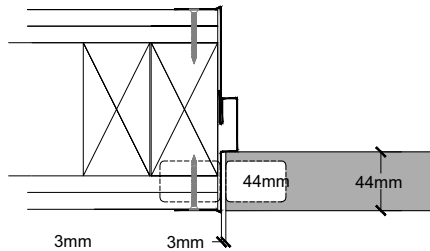
Concealed hinges

Timber stud partitioning

- Double stud
- Single skin plasterboard
- Concealed hinge

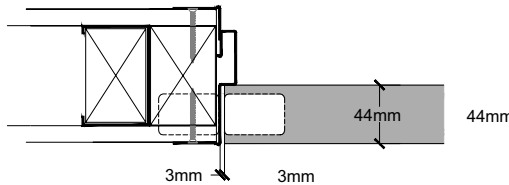


- Double stud
- Double skin plasterboard
- Concealed hinge

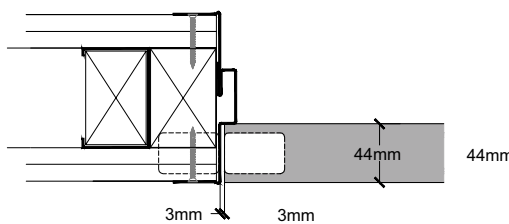


Steel stud partitioning

- Double stud
- Timber stud inserts
- Single skin plasterboard
- Concealed hinge



- Double stud
- Timber stud inserts
- Double skin plasterboard
- Concealed hinge



Important

If using a steel stud then a timber insert must be used.

Using Butt hinges

Simple and quick to install, the butt hinges are surface mounted and supplied with self drilling screws.



1

Stud construction

Construct your stud partition in the standard way. If using steel stud then a timber insert is required within the stud of at least 45mm depth.



2

Level-up and plasterboard

When forming the actual opening, ensure you are working to the correct structural opening size provided on the Selo door schedule.

Ensure the opening is square and level and that the wall is plumb.

Important

The joint in the plasterboard must not be in line with the jambs, but must meet centrally over the opening as shown.



Using concealed hinges

These instructions apply to the installation of the RY80, RY45, SOSS and Tectus hinge systems.



1

Stud construction

Construct your stud partition with a double stud on the hinge side. This is to provide extra strength due to the notching required for the Concealed hinges.



3

Offer up

Offer the hinge jamb up to the stud and mark a line at the top of the hinge in all the hinge brackets.



2

Level-up and plasterboard

When forming the actual opening, ensure you are working to the correct structural opening size provided on the Selo door schedule.

Ensure the opening is square and level and that the wall is plumb.

Important

When using a partition made from steel studs, ensure that the final stud is a timber stud. This will make the notching process for the concealed hinges a vastly simpler process.



4

Mark

Using the notch template, line the slot in the template up with the lines you have made on the stud and draw around the template. This gives you the exact size of the notch required.

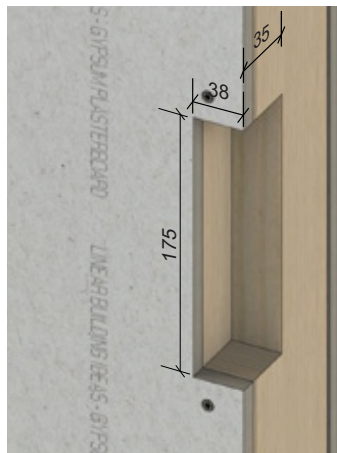


5

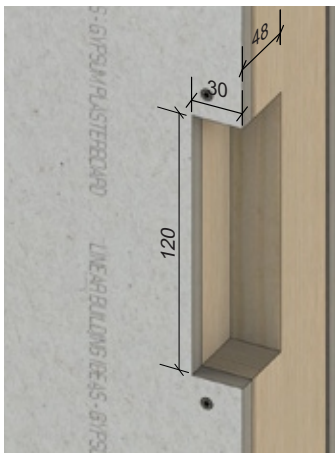
Notch partition for hinges

The hinge stud needs to be notched to accommodate each bracket and hinge.

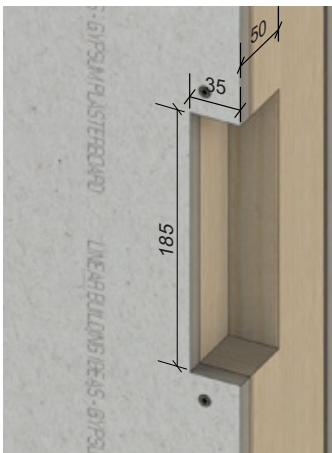
Use the correct measurements as shown below.



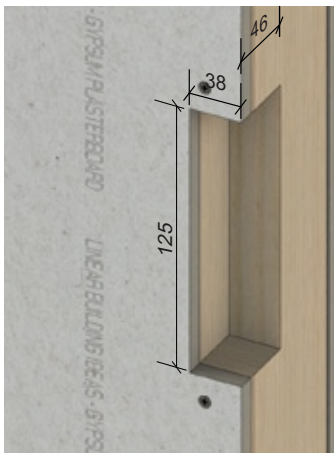
1.1 Tectus notch



1.2 RY-45 notch



1.3 RY-80 notch



1.3 Soss notch

Multi purpose saw

Multi-tool

The recommended tool for cutting in the notches is the multi purpose saw. This can be hired or purchased from Em-B

Purchase

£200.00 + VAT

Includes the Bosch multi-tool and x2 blades.

Hire

First week **£70.00 + VAT**

Includes delivery and collection plus x1 blade.

£25.00 + VAT per week thereafter.

Additional blades

£20.00 + VAT

x1 standard multi purpose blade for timber and metal.



For more information speak to one of our advisors today:

tel 0113 245 9559

email info@em-b.co.uk

Simplifying interior design and functionality

Doorset solutions:



Arriva & Innova

Concealed frame doorsets



Quadra & Una

Riser door systems



Enigma

Pocket sliding door systems



Leeds Office
Forge House
42-44 Burley Road
Leeds
LS3 1JX
T: 0113 245 9559
F: 0113 245 9779

Ashford Office
Ground Floor, Unit 4
Highpoint Business
Village, Ashford
TN24 8DH
T: 0123 364 7788
F: 0123 365 5244

Birmingham Office
Suite 412
51 Pinfold Street
Birmingham
B2 4AY
T: 0121 369 2045
F: 0121 369 2046

London Office
Hamilton House
Mabledon Place
Off Euston Road
London, WC1H 9BB
T: 0207 099 8299
F: 0207 099 9351

Manchester Office
Suite 304
275 Deansgate
Manchester
M3 4EL
T: 0161 635 0485
F: 0161 635 0490

Sheffield Office
Suite 168
88 Queen Street
Sheffield
S1 2FW
T: 0114 345 0235
F: 0114 345 0236



info@em-b.co.uk
www.em-b.co.uk